

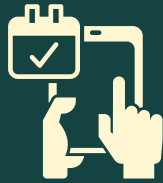
# BUTTERWORTH PARK

## COURT INFORMATION

Tennis ALWAYS has priority on tennis courts



PARK HOURS: DAWN-DUSK



Courts are first come, first serve. Courts may NOT be reserved.



Courts **CLOSED** for Framingham Parks and Rec programming Wednesday nights 9/4-9/25



For more information on our programs visit  
[www.framinghamrec.com](http://www.framinghamrec.com)

FOR MORE RULES  
AND INFORMATION  
VISIT:



Please do not play pickleball earlier than 7am M-F, and 8am Sat & Sun

[WWW.FRAMINGHAMREC.COM](http://WWW.FRAMINGHAMREC.COM)



EMAIL: [PARKS.RECREATION@FRAMINGHAMMA.GOV](mailto:PARKS.RECREATION@FRAMINGHAMMA.GOV)

CALL: 508-532-5960